



Venue Rider

## MotorCity Casino Hotel

Mailing & Shipping: MotorCity Casino Hotel  
Attn: Entertainment  
2901 Grand River Avenue  
Detroit, Michigan 48201

Theater Name: **Sound Board**

Web Pages: [www.MotorCityCasino.com](http://www.MotorCityCasino.com)  
[www.SoundBoardDetroit.com](http://www.SoundBoardDetroit.com)

Main Phone Number: (313) 237-7711

Entertainment Office: (313) 309-4690

Entertainment Fax: (313) 309-4680

Box Office Phone: (313) 309-4700

Box Office Fax: (313) 309-4695

Group Sales/ Special Needs Ticketing: (313) 309-4614

Sound Board Production Office: (313) 309-4682 / (313) 309-4683

Sound Board Production Office Fax: (313) 309-4684

### ENTERTAINMENT TEAM

**Bill Borenstein, Vice President of Entertainment**

MotorCity Casino Hotel and Sound Board (313) 309-4561 [bborenstein@mccemail.com](mailto:bborenstein@mccemail.com)

**Sarah Zawalski, Director of Booking**

Olympia Entertainment (313) 471-3388 [sarah.zawalski@olyent.com](mailto:sarah.zawalski@olyent.com)

**Shannon Bomia, Entertainment Manager**

MotorCity Casino Hotel and Sound Board (313) 237-6737 [sbomia@mccemail.com](mailto:sbomia@mccemail.com)

**Chris Sharp, Production Manager**

MotorCity Casino Hotel and Sound Board (313) 309-4579 [csharp@mccemail.com](mailto:csharp@mccemail.com)

**Christine Liniarski, Entertainment Manager [Box Office/Even Staff]**

MotorCity Casino Hotel and Sound Board (313) 309-4690 [cliniarski@mccemail.com](mailto:cliniarski@mccemail.com)

FOR ALL ARTIST TOUR ADVANCE NEEDS INCLUDING PARKING, HOTEL, F&B, AND SECURITY, PLEASE CONTACT  
**Shannon Bomia.**

*All shows to be advanced a minimum of two weeks prior to the show date.*

## TICKET PURCHASES

### Sound Board Box Office

Box Office Location: 2<sup>nd</sup> floor, by Sweet Ride Coffee Shop

Hours: Wed: 3pm-8pm  
Fri: 5pm-10pm  
Sat: 3pm-10pm  
Sun: 11am-4pm  
Opens at 3pm on event days.

### Summer Hours [June –August]

Sat: 3pm-10pm  
Sun: 11am-4pm  
Opens at 3pm on event days.

### Ticketmaster

Phone: (800) 745-3000

Web: [www.ticketmaster.com](http://www.ticketmaster.com)

Venue link for artist/promoter link purposes only: [www.ticketmaster.com/venue/66095](http://www.ticketmaster.com/venue/66095)

## SEATING CAPACITIES

1,620 Fully Seated  
1,560 Fully Seated w/o Orchestra Seats  
1,949 3/4 Seated/Mezz Level General Admission  
1,889 3/4 Seated/Mezz Level General Admission w/o Orchestra Seats  
2,405 Balcony Seated/Floor/Mezz/Orch General Admission  
1,551 Boxing/MMA  
460 Banquet

## SOUND BOARD BARS

**100 Level**, two total, behind Sections 110 and 150. 100 Level bars are visible from the stage.

**200 Level**, two total, behind Sections 220 and 250.

Outside 100 and 200 Levels in outer lobbies.

Additional portable bars added as needed

## SOUND BOARD MERCH LOCATION

**100 Level** behind Section 120. This is a permanent location, visible from the stage.

A secondary location can be set-up as designated by MotorCity Casino Hotel in the **200 Level** outer lobbies, using a designated MotorCity Casino Hotel kiosk display.

Seller should make provisions for wireless credit card machines.

## VENUE POLICIES

**Admittance:** All guests must have a valid ticket to enter Sound Board. Artists and Artists' personnel must be credentialed to enter Sound Board or any designated back-of-house area. Venue credentials are available upon request.

**ADA:** ADA Accessible seating AND ticket purchases are available through Ticketmaster. Please contact us directly at (313) 309-4614 for special need requests, including interpreting services and assisted listening devices.

**Convention Space:** Adjacent convention space is available for party rentals during all concert events. ***Live Show Video and Audio is simulcast in the casino, all VIP boxes, and adjacent convention meeting rooms when utilized in conjunction with concerts.***

**CCTV:** MotorCity Casino Hotel is licensed by the State of Michigan Gaming Control Board. CCTV is required throughout the entire facility.

**Doors:** House opens a minimum of 60 minutes prior to the show start time.

**Food & Beverage:** All food and beverage must be provided by MotorCity Casino Hotel. No outside food or beverage is permitted.

**Guest Lists:** Artist guest lists are requested two hours prior to the performance start time.

**Group Sales:** Group ticket sales, for ticket purchases of 20 or more tickets, are available for select events through the Sound Board Box Office. Call (313) 309-4614 for assistance.

**Items not permitted:** Weapons, restraining devices, laser pointers, and/or additional items as determined by MotorCity Casino Hotel.

**Marketing/Advertising:** Only approved logos provided by MotorCity Casino Hotel may be used on artist advertisements, promotions and/or web pages. Please contact us for a high resolution jpeg. MotorCity Casino Hotel Marketing must approve all logo placement/use prior to production.

**Merchandise:** Approved merchandise may be sold at designated MotorCity Casino Hotel Sound Board locations. Rate is per contract. Artist is responsible for payment of all taxes and credit card fees associated with the sale of merchandise.

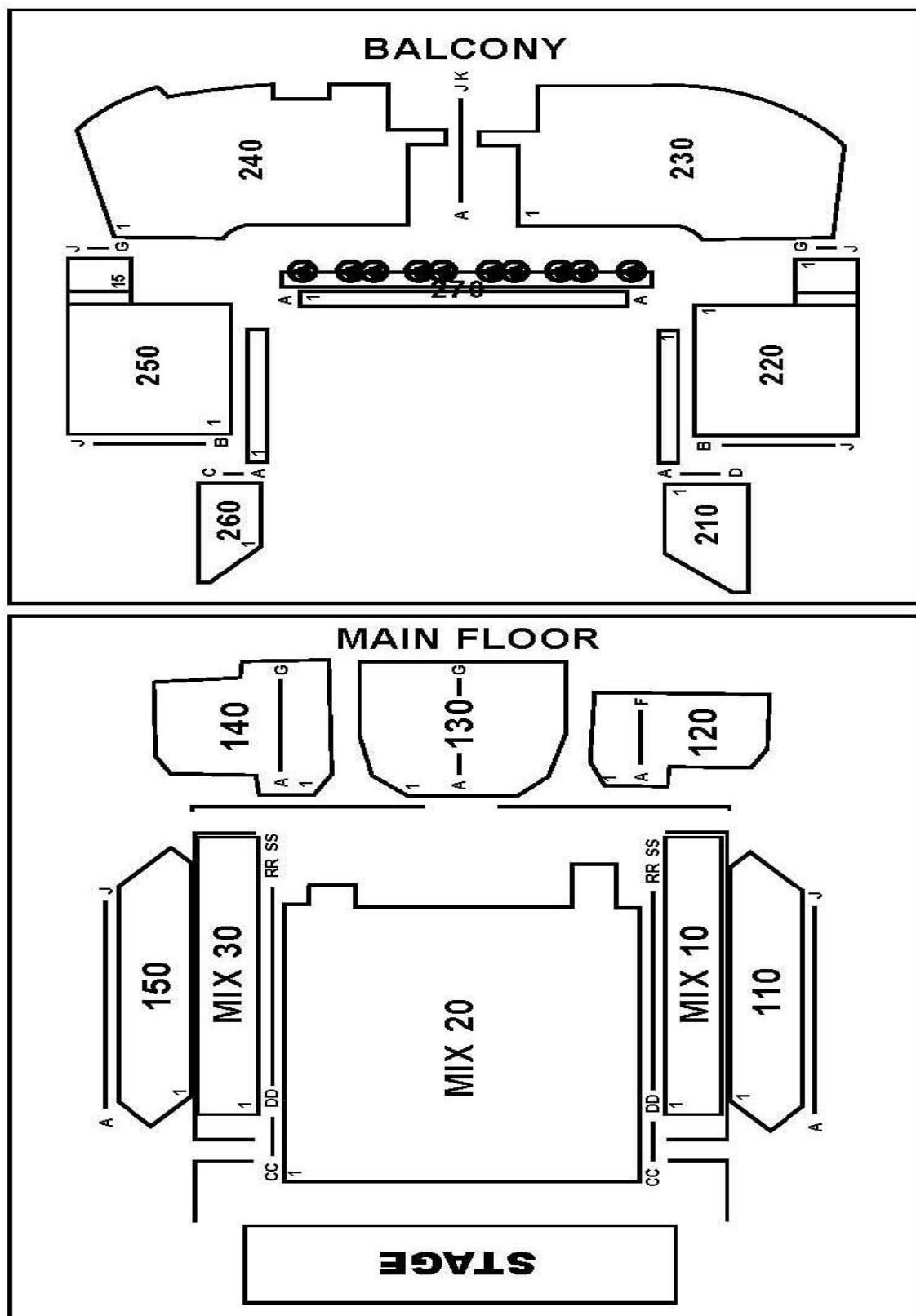
**Recording:** Use by guests of recording devices of any type is NOT permitted. *Artists wishing to record performances must receive prior approval by MotorCity Casino Hotel.*

**Runners:** MotorCity Casino Hotel does not provide runners but can assist in locating services to be paid by artist directly.

## GUEST POLICIES

- Age:** Guests must be at least 21 years old to attend shows unless specific exemption is given for designated show.
- Beverages:** Beverage service provided by MotorCity Casino Hotel is permitted during designated performances.
- Evacuation:** Events will stop and Sound Board will be evacuated if a fire alarm is activated or upon notification from the Security Director or Manager on Duty.
- Food:** Outside food is NOT permitted unless deemed medically necessary.
- Not Permitted:** Weapons, restraining devices, laser pointers, and additional items as determined by MotorCity Casino Hotel are not permitted inside Sound Board.
- Pass Outs:** Pass Outs are permitted via the 1<sup>st</sup> floor convention center entrance.
- Photography:** Flash photography is NOT permitted. Media photographers must be credentialed and must adhere to artist and MotorCity Casino Hotel policies.
- Recording:** Guest use of recording devices of any type is NOT permitted.
- Search:** Prior to entering Sound Board, all guests must pass through metal detection devices and/or are subject to search as required by MotorCity Casino Hotel Security.
- Smoking:** Smoking is NOT permitted.

## Sound Board Seating Chart



## TECHNICAL INFORMATION

**Load-In:** Sound Board Loading Dock [covered] at Brooklyn and Spruce  
One truck at a time. Dock Plate Provided  
Access to stage by roll-up door. Dimensions: (H) 10' 6" x (W) 14'  
Case Storage: On receiving dock: 30' x 30'  
Car Ramps: 14' Length, 6,000 lb. capacity

**Bus/Truck Parking:** Next to stage loading dock. Shore Power Available.  
Distance to Shore Power: 100' [Tour Provided]  
Power: 5 @ 30amp 120/2080

**Power:** 100 amp 3P 120/208 cam lock tie in: Down Stage Right  
400 amp 3P 120/208 cam lock tie in: Down Stage Right  
200 amp 3P 120/208 cam lock tie in: Down Stage Left  
200 amp 3P 120/208 cam lock tie in: Up Stage Left  
Stage right: Isolated Ground / Stage left: Building Ground  
***All power connect and disconnect MUST be done by MotorCity Casino Hotel personnel.***

**Total Square Footage:** 23,500 sq ft.

**Outside Paths:** 3 – 8" Cable Troughs Located Up Stage Left

**Stage:** Working stage: 50' 6" W x 21' D  
If orchestra stage extension used: 50' 6" W x 29' 9" D  
Stage height: 5' 5" House does not own a stage barricade.  
Elevation of stage over "mix level" is approximately 5'.  
Floor: Harlequin Cascade, Black  
Stage Weight Load: 100lbs. per sq. ft.  
Extension Weight Load Fixed: 65,375 lbs. total  
Extension Weight Load Moving: 26,375 lbs. total  
*Fixed front of stage is straight.*

**Stage Detail:** Proscenium Arch Width: 50' 6"  
Proscenium Arch Height: 27' at center  
Main curtain line to back curtain/CYC: 17'  
Fixed stage to back curtain/CYC: 21'  
Fixed stage to main curtain line: 4'  
Orchestra stage to main curtain line: 12' 9"  
Orchestra stage to back curtain/CYC: 29' 9"

**Rigging:** Stage: # of stage Points: 8 Load: See plot  
Current Lighting Truss Locations: See plot.  
***All stage rigging points in use for house goods and lights.***

House: # of stage Points: 14 Load: See plot  
Current Lighting Truss Locations: See plot.  
***Contact production manager for available point locations.***

***\*\*Additional rigging requires MCCH approval, signed and sealed drawings submitted a minimum of fourteen (14) business days prior to the event and MCCH Approved Engineering Firm Review and Approval, at sole cost to Producer/Production Company.***

<b>Steel:</b>	From Pit Floor:	High Steel	62'
		Low Steel	50'
	From Stage:	High Steel	56' 5"
		Low Steel	44' 5"
<b>Main Curtain:</b>	Hand driven Color: Blue Type: Traveler, no center overlap		
<b>House Goods:</b>	Upstage: One (1) fixed CYC/scrim (white) Upstage: One (1) black traveler [in front of CYC/scrim] Wing Black-Outs: Black travelers		
<b>Risers:</b>	Various height configurations available Stage Right: 4'x8' Reversible Black Techstage/Gray Carpet Sico 6'x8' Black Carpeted		
<b>Lift:</b>	Genie AWP40S		

**Smoke/Heat Fire Detection Devices:** Sound Board has a mixture of smoke and heat detection devices as required by the City of Detroit and the State of Michigan. Disabling, disarming, or tampering with these devices is strictly prohibited.

MotorCity Casino Hotel is not permitted, at any time or for any reason, to disarm the Fire/Life Safety Systems.

Only water-based hazers or foggers are permitted inside Sound Board.

**VIP Boxes:** Sound Board has two (2) VIP boxes that are used for every event.

Stage Box: Located on the 200 Level - Stage Left – Back Stage.

***Stage Box is located back stage.***

Sky Box: Located on the 200 Level - House Left – Front of House

***Both boxes are glass enclosed and include simulcast live video and audio feeds.***



## **Sound Board FACILITIES**

### **Production Office:**

Located Stage Left

Dimensions: 13'2" x 9'7".

Equipment:

One dedicated phone line.

One dedicated fax line.

Phone numbers advanced directly.

One fax/copy/printer. Printer available via network cable.

One LCD TV.

### **Dressing Rooms:**

Stage Left: One (1) Quick Change dressing room with bathroom/shower.  
Dimensions: 7'6" x 12'2"

Stage Right: One (1) Star dressing room with bathroom/shower.  
Dimensions: 12'10" x 15' 7" [DR: A]

Two (2) dressing rooms with private bathrooms.  
Dimensions: 12'10" x 17' 7" [DR: B]  
Dimensions: 10'7" x 14' 4" [DR: C]

A universal bathroom is located in the dressing room area.

All dressing rooms have mirrors, furniture, telephone, refrigerator and an LCD TV with Direct TV, stage and audience camera feeds.

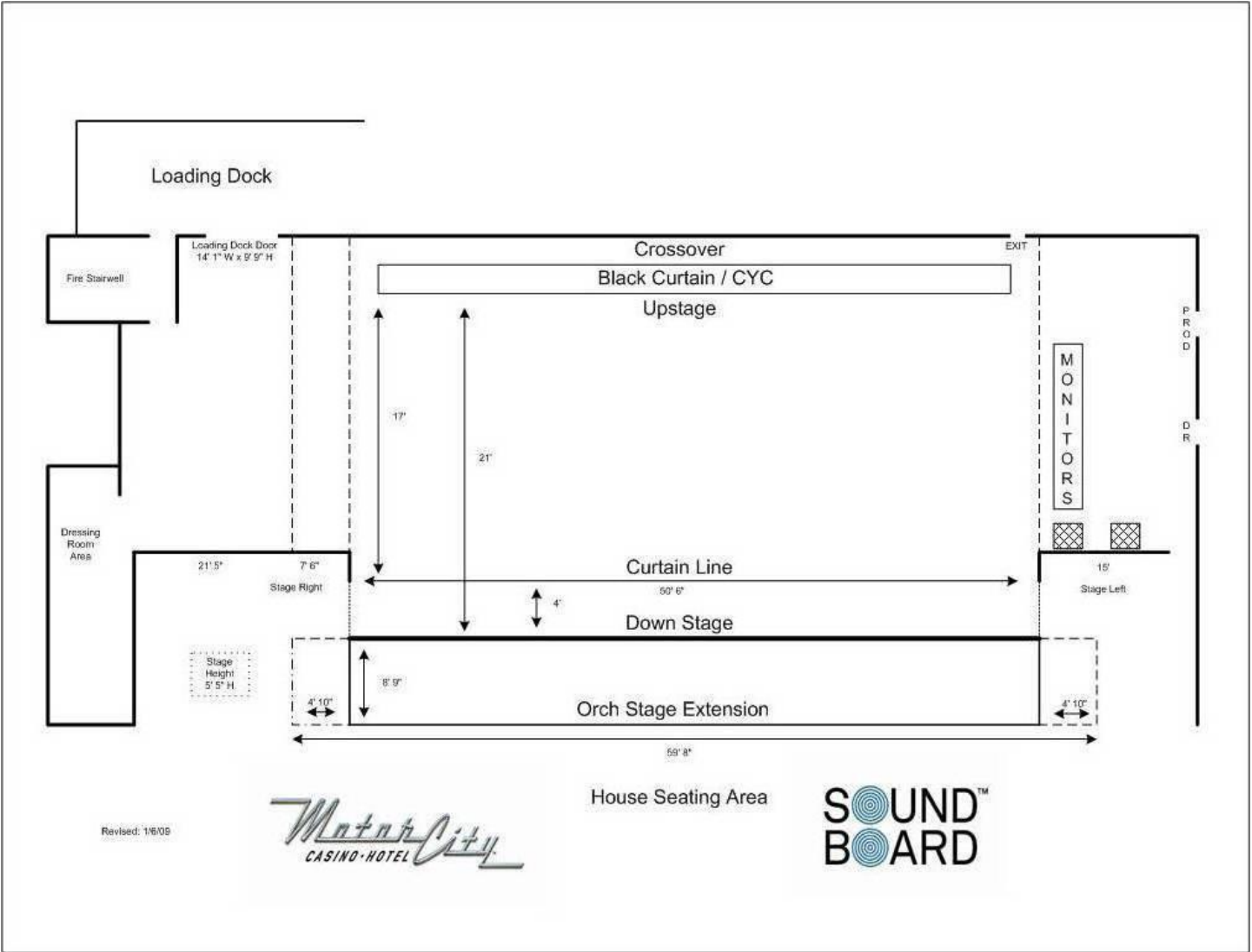
### **Laundry Room:** Located Stage Right

Washer: Whirlpool WTW8500DC0  
5.3 cu. ft. Cabrio® High-Efficiency Top Load Washer

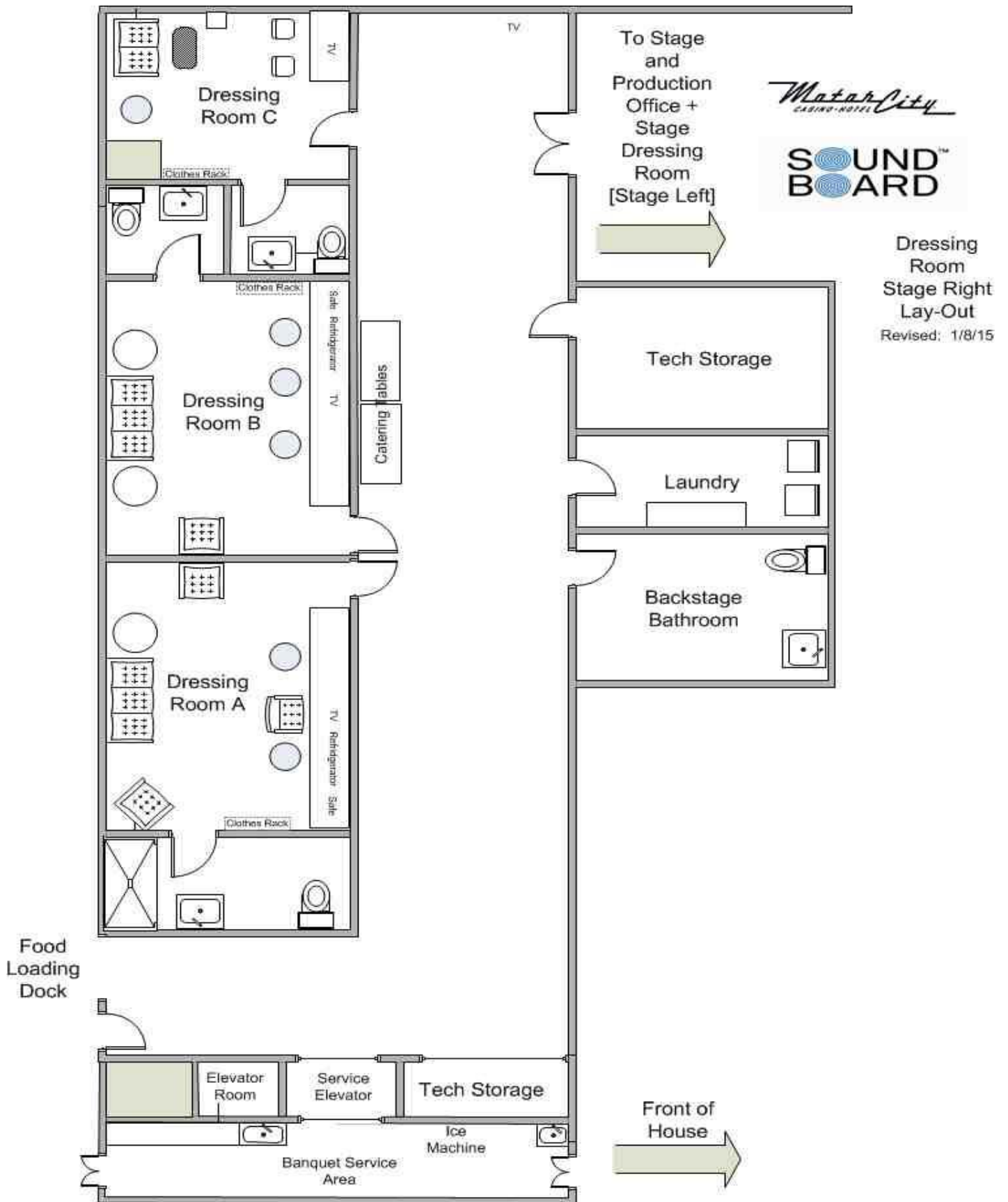
Dryer: Whirlpool WED8500DC0  
8.8 cu. ft. Cabrio® High-Efficiency Electric Steam Dryer

**Internet:** Free Wireless internet is provided for all theater production and dressing room areas.

Sound Board  
STAGE PLAN



**Sound Board  
STAGE RIGHT FLOOR PLAN  
Dressing Rooms**

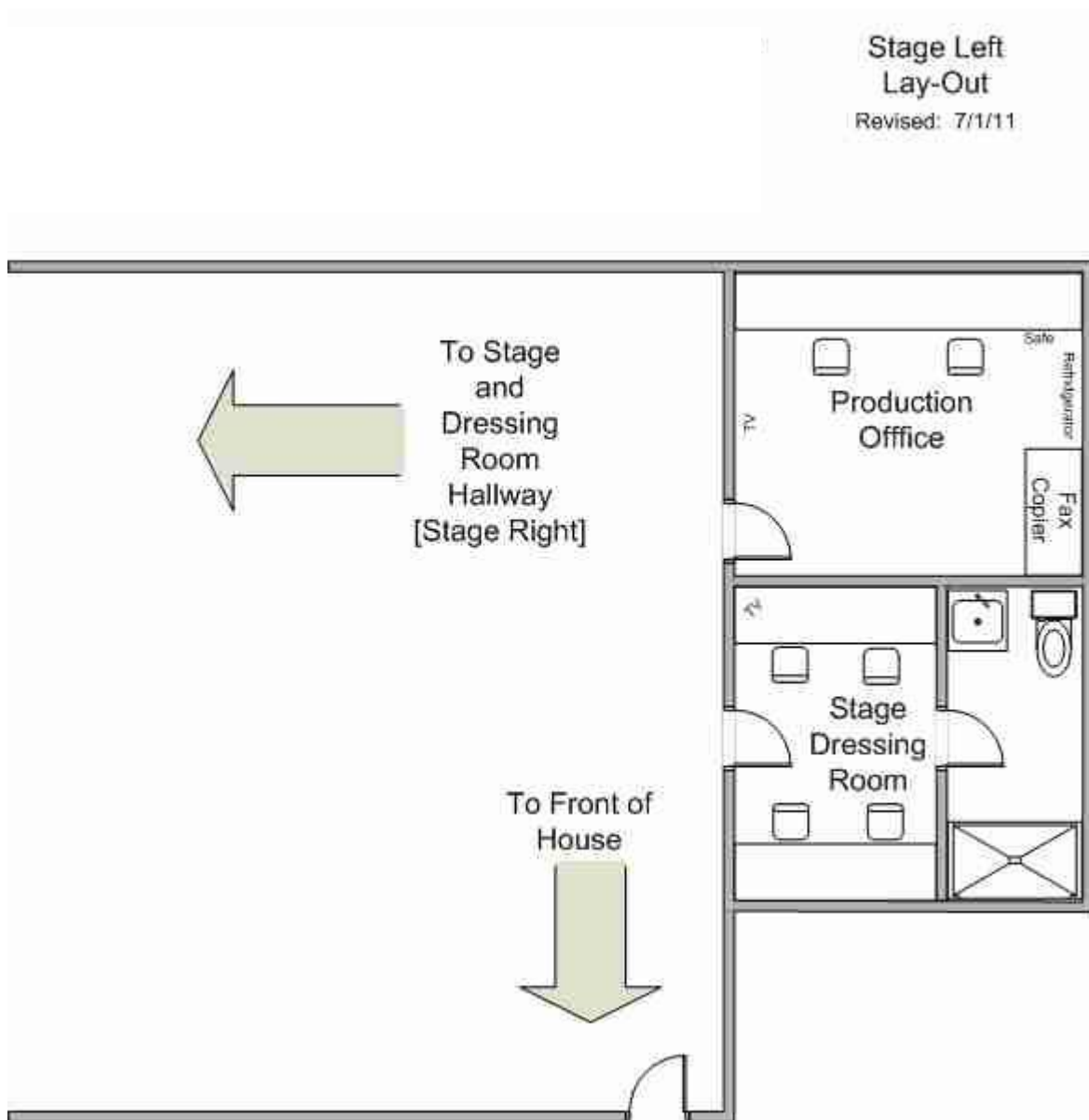


*Matar City*  
CASINO · HOTEL

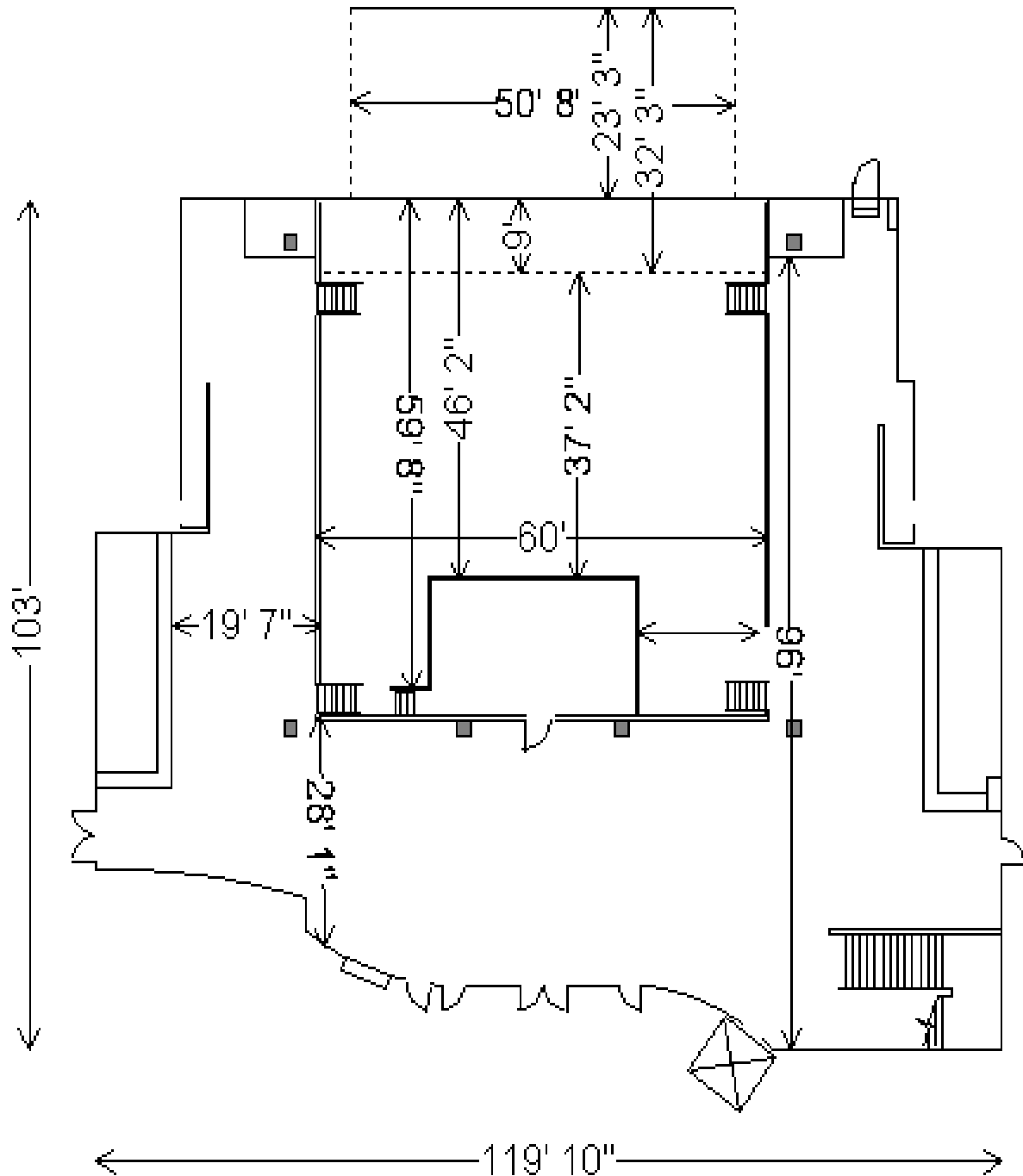
**SOUND  
BOARD**

Dressing Room  
Stage Right  
Lay-Out  
Revised: 1/8/15

**Sound Board**  
**STAGE LEFT FLOOR PLAN**  
**Production Office & Quick Change**

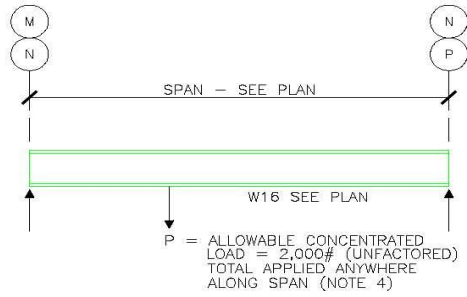


# Sound Board MAIN FLOOR DIMENSIONS

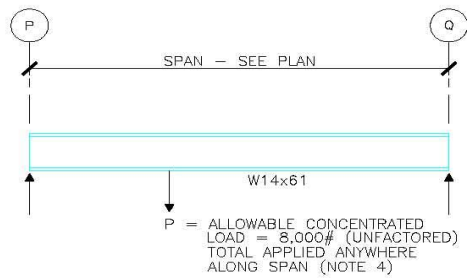


# Sound Board RIGGING POINTS

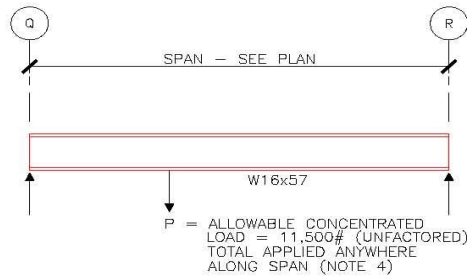
## ROOF PURLIN LOADING DIAGRAMS (NOTE 3)



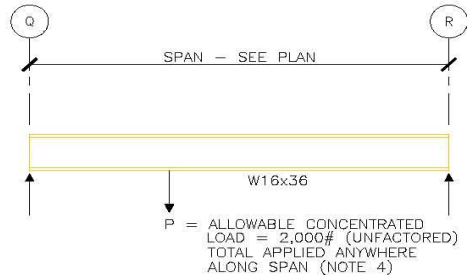
THEATRE AREA PURLIN



THEATRE AREA PURLIN



STAGE CENTER PURLIN

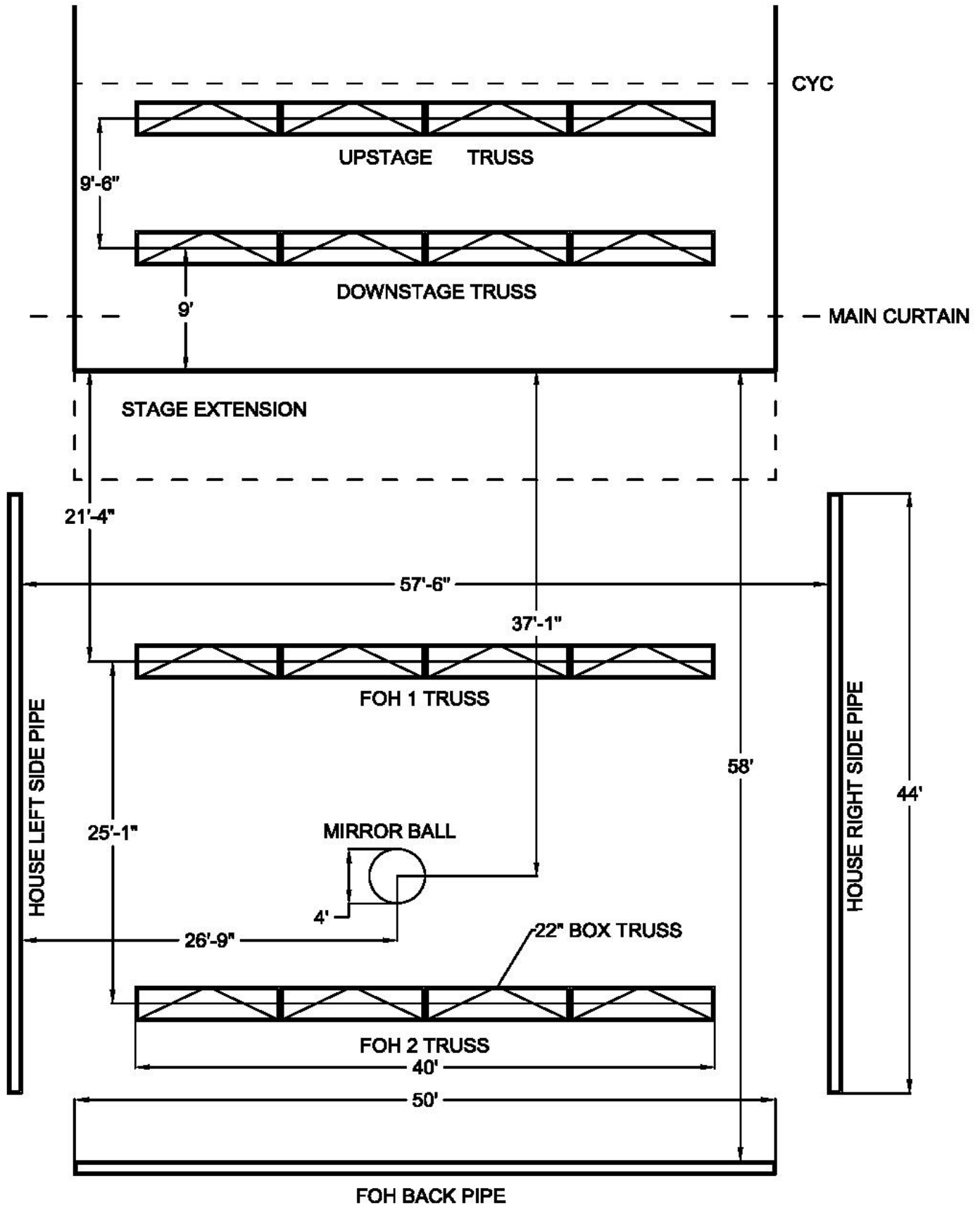


STAGE LEFT & RIGHT PURLIN

### Sound Board RIGGING POINTS (Continued)



# **Sound Board TRUSS DIMENSIONS**





## AUDIO

**FOH Mixing/Control Location:** The front-of-house mix location is orchestra level, 50' from stage, 941' if orchestra extension stage is used, housing the sound, video, and lighting control areas, and measures 24' wide and 12' deep. It is a raised platform 7" above the seated "pit" area or 28" above the standing "pit" area. Tour sound, lights, and video will use this location if providing own boards. ***Live Show Video and Audio is simulcast in the casino, all VIP boxes and adjacent convention meeting rooms when utilized in conjunction with concerts.***

**Mains Speaker System:** The Mains Speaker system consists of left and right line array clusters utilizing d&b J- series line array elements flown on 2-ton chain motors situated either side just outside the proscenium.

Cluster Specifications (each):	10	d&b	J-8 3 way line array elements
	3	d&b	J-Sub Cardioid line array subwoofer elements
	2	d&b	J-series flying frames
	2	CM	Loadstar 2 ton chain hoists

Cluster Power (each):	8	d&b	D-12 processed amplifiers w/ AES input
-----------------------	---	-----	--

**Stage Subwoofers:** There are 3 d&b B-2 subwoofers either side of the stage (6x B-2 subs total) located on the floor directly below each cluster powered by 4 d&b D-12 amplifiers

<b>Front Fills:</b>	4x d&b Q-7 speakers powered by 1x d&b D-12 amplifier
<b>Out-Fills:</b>	2x d&b Q-7 speakers powered by 1x d&b D-12 amplifier
<b>Balcony Fills:</b>	2x d&b Q-7 speakers powered by 1x d&b D-12 amplifier
<b>Balcony Delay:</b>	2x d&b Q-7 speakers powered by 1x d&b D-12 amplifier
<b>1<sup>st</sup> Floor Under Balcony Fills:</b>	8x d&b E-8 speakers powered by 2x d&b D-6 amplifier (on delay)

**Front of House:** The house mix console is a Digidesign – Venue D-Show console with 2x (16 fader) side car units for a total of 40 channel faders available without paging.

Digidesign – Venue D-Show

Console specifications:	48 mic inputs (plus 8 AES stereo inputs) total 64 inputs with I/O
	16 stereo effect returns
	27 buses
	8 mono matrices
	8 stereo matrices
	5 AES/8 channel output card
	1 Analog/8 channel output card
	1 Ethernet card
	Dynamics processing on each channel
	24 assignable graphic EQ's

TDM plug-ins:	Eventide Anthology bundle
	Focusrite d2/d3
	Joemeek bundle
	VSS3 – TC electronic bundle
	2 I/Ox at FOH rack providing AES inputs / outputs FOH for outboard gear
	HDx module for interface to Pro-Tools HD 64 channel recording

Mains FOH Accessories:

- 2 Dolby Lake processors for 16 channels of FOH equalization
- AES in/out inserted into console matrix outputs.
- 1 Additional Dolby Lake processor for back-up.
- 1-CD Playback Tascam CD-01U
- 1-CD Record Tascam CD-RW901SL
- 1-360 Systems Instant Replay 2
- 1-Whirlwind Press Mite 1 In/12 Mic Out & 2 Line Out
- 1-8 Channel Multi XLR In/Out Hard Wired Box at FOH
- 1-Dugan E3
- 1-ASUS Xonar Essence One

Note: a complete digital signal chain is maintained from the stage box input converters thru the console, through the Dolby Lake EQ's to the amplifier AES inputs.

***Under stage snake trough with pull rope for guest run available***

**Monitors:** The Monitor mix console is a Digidesign – Venue D-Show console with 2x (16 fader) side car units for a total of 40 channel faders available without paging. It is located Stage Left.

Digidesign – Venue D-Show Console specifications:

- 48 mic inputs
- 16 stereo effect returns
- 27 buses
- 8 mono matrices
- 8 stereo matrices
- 2 AES/8 channel output card
- 2 Analog/8 channel output card
- 1 16 channel A-Net output card
- 1 Ethernet card
- Dynamics processing on each channel
- 24 assignable graphic EQ's

TDM plug-ins:

- Eventide Anthology bundle
- Focusrite d2/d3
- Joemeek bundle
- VSS3 – TC electronic bundle
- I/Ox at FOH rack providing AES inputs / outputs FOH for outboard gear

Monitor Accessories: 1-Denon DW-D600 Dual Deck CD Player

Monitor Speaker Systems:

4 d&b M2	2-way active floor wedge monitors
8 d&b M4	2-way active floor wedge monitors
2 d&b Side Fills	Top: C7 [1x15x2]/Bottom (2) C-Sub [1x18]
1 QSCDrum Sub	KW 181

**Stage Split System:** To maintain independent FOH and Monitor mic-pre adjustment a 56 input Jensen transformer mic splitter is used to split all analog mic signals to two independent stage racks. A third isolated split is available for TV truck applications.

**Intercom System:** Clear-Com intercom system for sound, lights and video intercom. 10 Wired Stations and 4 Wireless Stations Available. 1-HL, 1-HR, 2-Followspots, 5-FOH, 1-Stage entrance.

**Audio Monitoring & Page System:** Backstage monitors in all dressing rooms, hallways and production offices. Paging from multiple locations

**Microphone Inventory:**

<b>MFG</b>	<b>Model</b>	<b>Qty</b>	<b>MFG</b>	<b>Model</b>	<b>Qty</b>
AKG	414 – Overhead Mic	2	Shure	SM57	5
Sennheiser	A421	4	Shure	SM81	2
Shure	Beta 57A	6	Sennheiser	EM100 G3-A	2
Shure	Beta 58A	5	Sennheiser	SKP100 G3-A	2
Shure	Beta 52A	1	Nady	WPM-2U	2
Shure	Beta 98	5	Sennheiser	E609	2
Shure	SM58	6	Sennheiser	835s	1
Shure	SM58 Wireless transmitter	2	Sennheiser	E-604	6
Shure	ULX-P4 Dual Wireless receiver	2	Sennheiser	Podium Mics	2
Shure	UA870x Antenna paddle	2	Radial	DI-Passive	10
Shure	Beta 91A	1	Radial	DI-Active	2
Whirlwind	PCDI	2	Countryman	E6 [tan]	2

**Wireless:**

Shure UHF-R 6 Handheld / Lav Combo

Rental microphones available if needed to supplement.

## VIDEO

**Video Control Location:** The front-of-house mix location is orchestra level 50' from stage (41' if orchestra extension stage is used), housing the sound, video and lighting control areas, and measures 24' wide and 12' deep. It is a raised platform 7" above the seated "pit" area or 28" above the standing "pit" area. Tour sound, lights and video will use this location if providing own boards.

**Video Simulcast:** Live Show Video and Audio is simulcast in the casino, all VIP boxes and adjacent convention meeting rooms when utilized in conjunction with concerts.

**Video Equipment:** 3 Panasonic SD cameras with remote (Telemetrics) pan/tilt/zoom controls  
4 BlackMagic Smartview Monitors  
1 Panasonic AG MX-70 SD SDI switcher 8 input  
1 JVC SR-HD1500 Blu-ray player  
1 Pioneer DVD V8000 DVD player  
1 BlackMagic HyperDeck Pro  
1 Scan Do SD-SDI converter/scaling  
1 iMac 21.5" with Microsoft office, iWork, and ProPresenter 5  
1 Alienware pc with Microsoft office and ProPresenter 5  
1 Barco Image Pro II with Dual-scalable outputs  
1 DirecTV HD satellite box

**Video Projection:** 1 Panasonic PT-DZ21KU HD Video Projector, 20K lumen [Center]  
2 Christie LX 120 video projectors, 12K lumen [Left/Right Balcony]  
\*\*Dedicated Projectors

Center Projection Screen: CYC/Scrim 30'W x 20'H (Scalable Projection)  
Or  
Center Screen 24'W x 13'6" H located in front of main curtain

Stage Right and Left Projection Screens: 16'W x 9'H Screens on 200 Level

Notes: All screens are front projection.  
All above screens are motorized (except CYC/Scrim).

Additional FOH Projection  
(Stage Level-Portable): 2 Christie Roadsters X6 projectors  
2 De-light fast fold screens 6'H x 9'W with full dress kits

**Plasmas:** 10 Panasonic 50" Plasma displays (HD) w/ SD-SDI inputs\*  
6 Panasonic 58" Plasma displays (HD) w/ SD-SDI inputs\*  
1 Panasonic 42" Plasma displays (HD) w/ SD-SDI inputs\*

\*For use as orchestra/balcony front displays, bar displays, theater entrance displays and VIP area displays. All plasmas permanently installed

**CCTV Monitoring System:** Backstage video monitors in all dressing rooms, hallways and production offices RF CATV system and Sound Board Program feed.

## OTHER PRESENTATION EQUIPMENT

Additional equipment includes:

1	DSAN Limitimer PRO-2000BT
2	Power Point Remotes

## LIGHTING

**Lighting Control Location:** The front-of-house mix location is orchestra level 50' from stage (41' if orchestra extension stage is used), housing the sound, video and lighting control areas, measures 24' wide and 12' deep. It is a raised platform 7" above the seated "pit" area or 28" above the standing "pit" area. Tour sound, lights and video will use this location if providing own boards.

**Console:** HES Road Hog Full Boar console has 2- 12" color touch screen monitor 10 playback faders w/programmable Road Hog wing 1- 12" touch screen monitor & 10 play back faders.

**Lighting Fixtures:**

2	DL-3 Digital Lighting Fixtures
34	HES Studio Spot 575 CMY
12	HES Studio Command 1200
9	HES color command 750
4	HES Studio Color 575
8	ACL units
12	Strand vari-zoom 575 Ellipsoidal
7	Color Kinetics Color Blaze
4	Elation Colorado 3-Panel LED
1	LED Arch proscenium
12	Philips Colorblast TRX

*See plot for configuration*

### Effects:

1	HES Axon Media Server
1	36" Mirror Ball w/ Motor
1	LA Maître Radiance Touring Haze System
2	Antari Ice low lying fog machine
2	LeMaitre slow fogger pro
2	Chauvet Geyser RGB

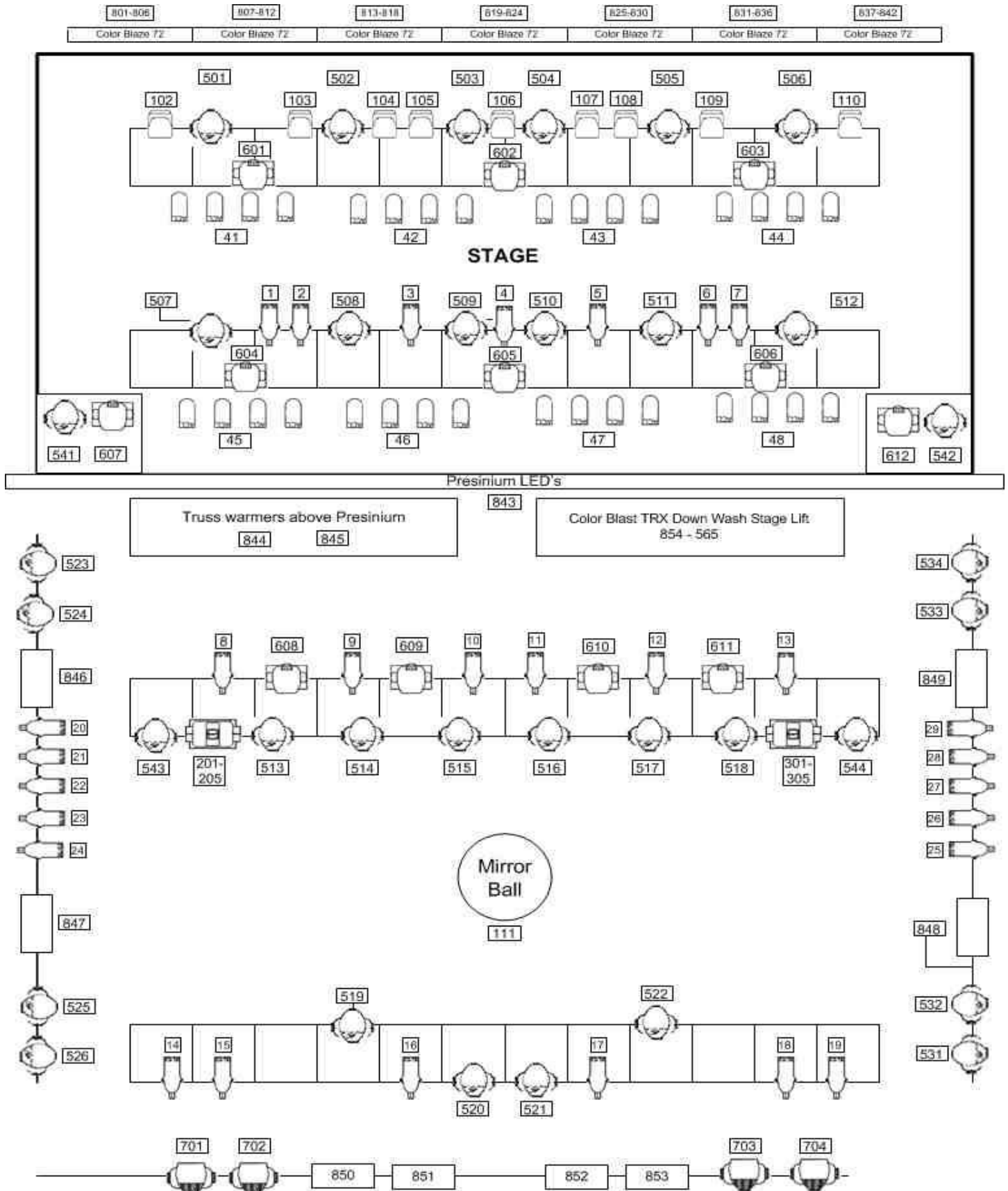
### Dimming:

2	24 channel 2.4 w ETC Sensor Racks (Total 48 channel)
1	Chauvet 4ch. Dimmer relay pack

**Follow Spots:** Spots are located on balcony level at rear of house on platform center to stage.

2	Canto 1200w Long Throw Follow Spots
---	-------------------------------------

# Sound Board LIGHTING PLOT





**Sound Board  
LIGHTING PATCH  
Page 1 of 5**

Universe	DMX Address	Fixture Number	Fixture Type	Note	Truss
2	350	1	Desk Channel	Truss 2 Leko	2
2	345	2	Desk Channel	Truss 2 Leko	2
2	344	3	Desk Channel	Truss 2 Leko	2
2	346	4	Desk Channel	Truss 2 Leko	2
2	342	5	Desk Channel	Truss 2 Leko	2
2	351	6	Desk Channel	Truss 2 Leko	2
2	341	7	Desk Channel	Truss 2 Leko	2
2	357	8	Desk Channel	Truss 3 Leko	3
2	356	9	Desk Channel	Truss 3 Leko	3
2	355	10	Desk Channel	Truss 3 Leko	3
2	354	11	Desk Channel	Truss 3 Leko	3
2	353	12	Desk Channel	Truss 3 Leko	3
2	352	13	Desk Channel	Truss 3 Leko	3
2	363	14	Desk Channel	Truss 4 Leko	4
2	362	15	Desk Channel	Truss 4 Leko	4
2	360	16	Desk Channel	Truss 4 Leko	4
2	359	17	Desk Channel	Truss 4 Leko	4
2	358	18	Desk Channel	Truss 4 Leko	4
2	361	19	Desk Channel	Truss 4 Leko	4
2	490	20	Desk Channel	HL Rail Leko	Rail
2	489	21	Desk Channel	HL Rail Leko	Rail
2	495	22	Desk Channel	HL Rail Leko	Rail
2	493	23	Desk Channel	HL Rail Leko	Rail
2	494	24	Desk Channel	HL Rail Leko	Rail
2	487	25	Desk Channel	HR Rail Leko	Rail
2	486	26	Desk Channel	HR Rail Leko	Rail
2	485	27	Desk Channel	HR Rail Leko	Rail
2	510	28	Desk Channel	HR Rail Leko	Rail
2	509	29	Desk Channel	HR Rail Leko	Rail
2	333	41	Desk Channel	ACL1	1
2	332	42	Desk Channel	ACL2	1
2	331	43	Desk Channel	ACL3	1
2	334	44	Desk Channel	ACL4	1
2	349	45	Desk Channel	ACL5	2
2	348	46	Desk Channel	ACL6	2
2	347	47	Desk Channel	ACL7	2
2	346	48	Desk Channel	ACL8	2
2	500	1001	Desk Channel	Hazer	
2	501	1002	Desk Channel	Hazer	
1	505	1010	Desk Channel	Snow Machine	4
1	506	1011	Desk Channel	Snow Machine	4
2	496	1201	Desk Channel	Low Fog	
2	389	1301	Desk Channel	Geyser Fog	
2	390	1302	Desk Channel	Geyser Red	
2	391	1303	Desk Channel	Geyser Green	
2	392	1304	Desk Channel	Geyser Blue	
2	393	1305	Desk Channel	Geyser Color Mix	
2	394	1306	Desk Channel	Geyser Auto Spd	
2	395	1307	Desk Channel	Geyser Strobe	
2	396	1308	Desk Channel	Geyser LED Dimmer	
4	491	3001	Desk Channel	Dim Pk 1 CH3	Rail

**Sound Board  
LIGHTING PATCH  
Page 2 of 5**

Universe	DMX Address	Fixture Number	Fixture Type	Note	Truss
4	492	3002	Desk Channel	Dim Pk 1 CH4	Rail
4	496	3003	Desk Channel	Dim Pk 2 CH4	Rail
4	488	3004	Desk Channel	Dim Pk 3 CH4	Rail
4	511	3005	Desk Channel	Dim Pk 4 CH3	Rail
4	512	3006	Desk Channel	Dim Pk 4 CH4	Rail
2	490	4001	Desk Channel	Snow Machine	4
2	491	4002	Desk Channel	Snow Machine	4
3	504	111	Non Dim	Mirror Ball	
2	193	801	RGB LED	CYC	
2	196	802	RGB LED	CYC	
2	199	803	RGB LED	CYC	
2	202	804	RGB LED	CYC	
2	205	805	RGB LED	CYC	
2	208	806	RGB LED	CYC	
2	211	807	RGB LED	CYC	
2	214	808	RGB LED	CYC	
2	217	809	RGB LED	CYC	
2	220	810	RGB LED	CYC	
2	223	811	RGB LED	CYC	
2	226	812	RGB LED	CYC	
2	229	813	RGB LED	CYC	
2	232	814	RGB LED	CYC	
2	235	815	RGB LED	CYC	
2	238	816	RGB LED	CYC	
2	241	817	RGB LED	CYC	
2	244	818	RGB LED	CYC	
2	247	819	RGB LED	CYC	
2	250	820	RGB LED	CYC	
2	253	821	RGB LED	CYC	
2	256	822	RGB LED	CYC	
2	259	823	RGB LED	CYC	
2	262	824	RGB LED	CYC	
2	265	825	RGB LED	CYC	
2	268	826	RGB LED	CYC	
2	271	827	RGB LED	CYC	
2	274	828	RGB LED	CYC	
2	277	829	RGB LED	CYC	
2	280	830	RGB LED	CYC	
2	283	831	RGB LED	CYC	
2	286	832	RGB LED	CYC	
2	289	833	RGB LED	CYC	
2	292	834	RGB LED	CYC	
2	295	835	RGB LED	CYC	
2	298	836	RGB LED	CYC	
2	301	837	RGB LED	CYC	
2	304	838	RGB LED	CYC	
2	307	839	RGB LED	CYC	
2	310	840	RGB LED	CYC	
2	313	841	RGB LED	CYC	
2	316	842	RGB LED	CYC	
2	505	843	RGB LED	Arch	



**Sound Board  
LIGHTING PATCH  
Page 3 of 5**

Universe	DMX Address	Fixture Number	Fixture Type	Note	Truss
2	508	844	RGB LED	Deco Truss Mid	
3	490	845	Elation LED 12 Brick 6ch	Deco Truss Top	
4	289	846	Chauvet Colorado 3 M1	Balcony Rail	Rail
4	301	847	Chauvet Colorado 3 M1	Balcony Rail	Rail
4	313	848	Chauvet Colorado 3 M1	Balcony Rail	Rail
4	325	849	Chauvet Colorado 3 M1	Balcony Rail	Rail
4	337	850	Chauvet Colorado 3 M1	Balcony Rail	Rail
4	349	851	Chauvet Colorado 3 M1	Balcony Rail	Rail
4	361	852	Chauvet Colorado 3 M1	Balcony Rail	Rail
4	373	853	Chauvet Colorado 3 M1	Balcony Rail	Rail
3	1	854	Color Kinetics Color Blast TRX 8bit 5ch	Bottom Deco Truss	
3	6	855	Color Kinetics Color Blast TRX 8bit 5ch	Bottom Deco Truss	
3	11	856	Color Kinetics Color Blast TRX 8bit 5ch	Bottom Deco Truss	
3	16	857	Color Kinetics Color Blast TRX 8bit 5ch	Bottom Deco Truss	
3	21	858	Color Kinetics Color Blast TRX 8bit 5ch	Bottom Deco Truss	
3	26	859	Color Kinetics Color Blast TRX 8bit 5ch	Bottom Deco Truss	
3	31	860	Color Kinetics Color Blast TRX 8bit 5ch	Bottom Deco Truss	
3	36	861	Color Kinetics Color Blast TRX 8bit 5ch	Bottom Deco Truss	
3	41	862	Color Kinetics Color Blast TRX 8bit 5ch	Bottom Deco Truss	
3	46	863	Color Kinetics Color Blast TRX 8bit 5ch	Bottom Deco Truss	
3	51	864	Color Kinetics Color Blast TRX 8bit 5ch	Bottom Deco Truss	
3	56	865	Color Kinetics Color Blast TRX 8bit 5ch	Bottom Deco Truss	
2	405	101	Color Command Power		1
2	102	438	Color Command	Fixture	1
		330		Intensity	
2	103	434	Color Command	Fixture	1
		329		Intensity	
2	104	430	Color Command	Fixture	1
		328		Intensity	
2	105	426	Color Command	Fixture	1
		327		Intensity	
2	106	422	Color Command	Fixture	1
		326		Intensity	
2	107	418	Color Command	Fixture	1
		325		Intensity	
2	108	414	Color Command	Fixture	1
		324		Intensity	
2	109	410	Color Command	Fixture	1
		323		Intensity	
2	110	406	Color Command	Fixture	1
		322		Intensity	
AN6	202	22	DL3 HL	Global	3
AN7	302	22	DL3 HR	Global	3
AN5	402	1	Axon	Global	
AN6	203	57	DL3 HL	Graphic	3
AN6	203	95	DL3 HL	Graphic	3
AN6	203	133	DL3 HL	Graphic	3
AN6	203	171	DL3 HL	Graphic	3
AN6	203	209	DL3 HL	Graphic	3
AN6	203	247	DL3 HL	Graphic	3
AN6	203	285	DL3 HL	Graphic	3

**Sound Board  
LIGHTING PATCH  
Page 4 of 5**

Universe	DMX Address	Fixture Number	Fixture Type	Note	Truss
AN6	203	323	DL3 HL	Graphic	3
AN6	203	361	DL3 HL	Graphic	3
AN7	303	57	DL3 HR	Graphic	3
AN7	303	95	DL3 HR	Graphic	3
AN7	303	133	DL3 HR	Graphic	3
AN7	303	171	DL3 HR	Graphic	3
AN7	303	209	DL3 HR	Graphic	3
AN7	303	247	DL3 HR	Graphic	3
AN7	303	285	DL3 HR	Graphic	3
AN7	303	323	DL3 HR	Graphic	3
AN7	303	361	DL3 HR	Graphic	3
AN5	403	36	Axon	Graphic	
AN5	403	74	Axon	Graphic	
AN5	403	112	Axon	Graphic	
AN5	403	150	Axon	Graphic	
AN5	403	188	Axon	Graphic	
AN5	403	226	Axon	Graphic	
AN5	403	264	Axon	Graphic	
AN5	403	302	Axon	Graphic	
AN5	403	340	Axon	Graphic	
AN6	201	1	DL3 HL	Motion	3
AN7	301	1	DL3 HR	Motion	3
4	701	385	Studio Color 575	Rear Rail	
4	702	401	Studio Color 575	Rear Rail	
4	703	417	Studio Color 575	Rear Rail	
4	704	433	Studio Color 575	Rear Rail	
4	705	449	Studio Color 575	Rear Rail	
4	706	465	Studio Color 575	Rear Rail	
2	601	25	Studio Command 1200	Upstage Truss	1
2	602	39	Studio Command 1200	Upstage Truss	1
2	603	53	Studio Command 1200	Upstage Truss	1
2	604	67	Studio Command 1200	Downstage Truss	1
2	605	81	Studio Command 1200	Downstage Truss	1
2	606	95	Studio Command 1200	Downstage Truss	1
2	607	109	Studio Command 1200	Off Stage Truss	3
2	608	123	Studio Command 1200	Off Stage Truss	3
2	609	137	Studio Command 1200	Off Stage Truss	3
2	610	151	Studio Command 1200	Off Stage Truss	3
2	611	165	Studio Command 1200	Stage Floor	
2	612	179	Studio Command 1200	Stage Floor	
1	501	1	Sudio Spot 575 CMY	Upstage Truss	1
1	502	25	Sudio Spot 575 CMY	Upstage Truss	1
1	503	49	Sudio Spot 575 CMY	Upstage Truss	1
1	504	73	Sudio Spot 575 CMY	Upstage Truss	1
1	505	97	Sudio Spot 575 CMY	Upstage Truss	1
1	506	121	Sudio Spot 575 CMY	Upstage Truss	1
1	507	145	Sudio Spot 575 CMY	Downstage Truss	2
1	508	169	Sudio Spot 575 CMY	Downstage Truss	2
1	509	193	Sudio Spot 575 CMY	Downstage Truss	2
1	510	217	Sudio Spot 575 CMY	Downstage Truss	2
1	511	241	Sudio Spot 575 CMY	Downstage Truss	2



**Sound Board  
LIGHTING PATCH  
Page 5 of 5**

Universe	DMX Address	Fixture Number	Fixture Type	Note	Truss
1	512	265	Sudio Spot 575 CMY	Downstage Truss	2
1	513	289	Sudio Spot 575 CMY	Off Stage Truss	3
1	514	313	Sudio Spot 575 CMY	Off Stage Truss	3
1	515	337	Sudio Spot 575 CMY	Off Stage Truss	3
1	516	361	Sudio Spot 575 CMY	Off Stage Truss	3
1	517	385	Sudio Spot 575 CMY	Off Stage Truss	3
1	518	409	Sudio Spot 575 CMY	Off Stage Truss	3
1	519	433	Sudio Spot 575 CMY	Off Stage Truss	4
1	520	457	Sudio Spot 575 CMY	Off Stage Truss	4
1	521	481	Sudio Spot 575 CMY	Off Stage Truss	4
2	522	1	Sudio Spot 575 CMY	Off Stage Truss	4
4	523	1	Sudio Spot 575 CMY	Rail	
4	524	25	Sudio Spot 575 CMY	Rail	
4	525	49	Sudio Spot 575 CMY	Rail	
4	526	73	Sudio Spot 575 CMY	Rail	
4	529	145	Sudio Spot 575 CMY	Rail	
4	530	169	Sudio Spot 575 CMY	Rail	
4	531	193	Sudio Spot 575 CMY	Rail	
4	532	217	Sudio Spot 575 CMY	Rail	
2	533	241	Sudio Spot 575 CMY	Rail	
2	534	265	Sudio Spot 575 CMY	Rail	
3	541	442	Sudio Spot 575 CMY	Stage Floor	Floor
3	542	466	Sudio Spot 575 CMY	Stage Floor	Floor
3	543	341	Sudio Spot 575 CMY	Truss 3 Fixture 1	3
3	544	365	Sudio Spot 575 CMY	Truss 3 Fixture 8	3

## BUILDING AND FIRE CODE

MotorCity Casino Hotel follows the Building and Fire Codes as outlined by the City of Detroit and The State of Michigan. MotorCity Casino Hotel in its sole discretion has the right to not permit specific equipment usage if such use is deemed unsafe or questionable for safety and code reasons. The following MotorCity Casino Hotel policies apply:

**The use of any type of pyrotechnics is NOT permitted.**

**Fire/Flame devices of any type are NOT permitted.**

Hazers/foggers/smoke will be operated at the discretion of MotorCity Casino Hotel.

***\*\*Only water-based products are approved for Sound Board.***

Fire permits are, at times, required by the City of Detroit for specific events. MotorCity Casino Hotel will confirm requirement upon advance. City permitting must be scheduled a minimum of three (3) weeks prior to the event.

Electrical permits are, at times, required by the City of Detroit for specific events. MotorCity Casino Hotel will confirm such requirement upon advance. City permitting must be scheduled a minimum of three (3) weeks prior to the event.

Rigging, when permitted, requires approval by MotorCity Casino Hotel, as well as plan review and approval from a designated MotorCity Casino Hotel engineering firm. Plan submission is required a minimum of one (1) month prior to the event date. Costs associated with the engineering plan review are the sole responsibility of the artist/event.

Streamer cannons are permitted but require advance approval by MotorCity Casino Hotel.

Confetti cannons are NOT permitted.

Helium balloons, when permitted, must be professionally secured at all times.

All decorations must have a fire certificate on file prior to use at MotorCity Casino Hotel.

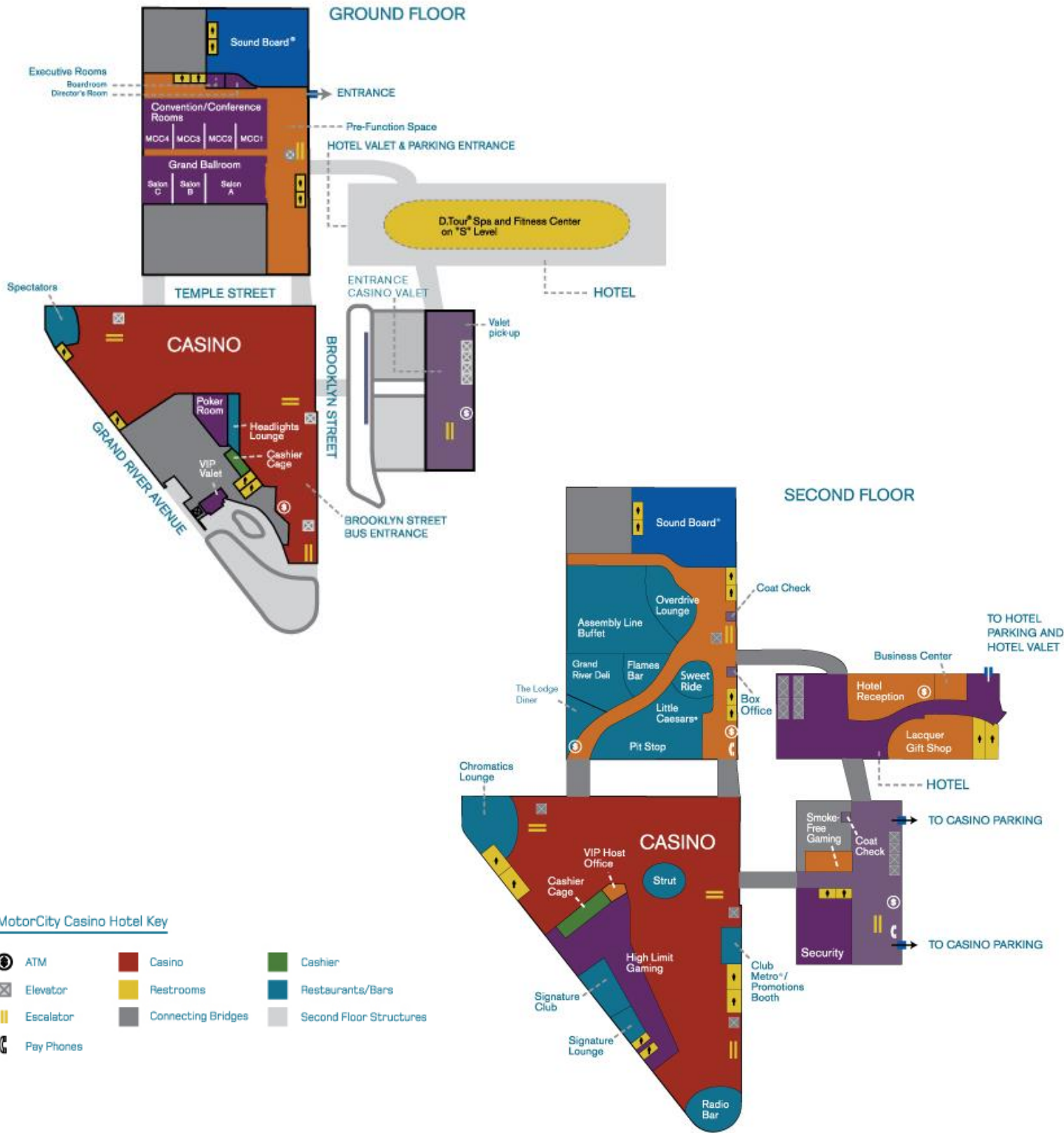
Hanging decorations and associated fixtures require safety cabling provided by the event producer.

Detroit Fire Department approval is required, in advance, in addition to MotorCity Casino Hotel advance approval, when vehicles are to be driven on property. City permitting must be scheduled a minimum of three (3) weeks prior to the event. All vehicles must meet fire code.

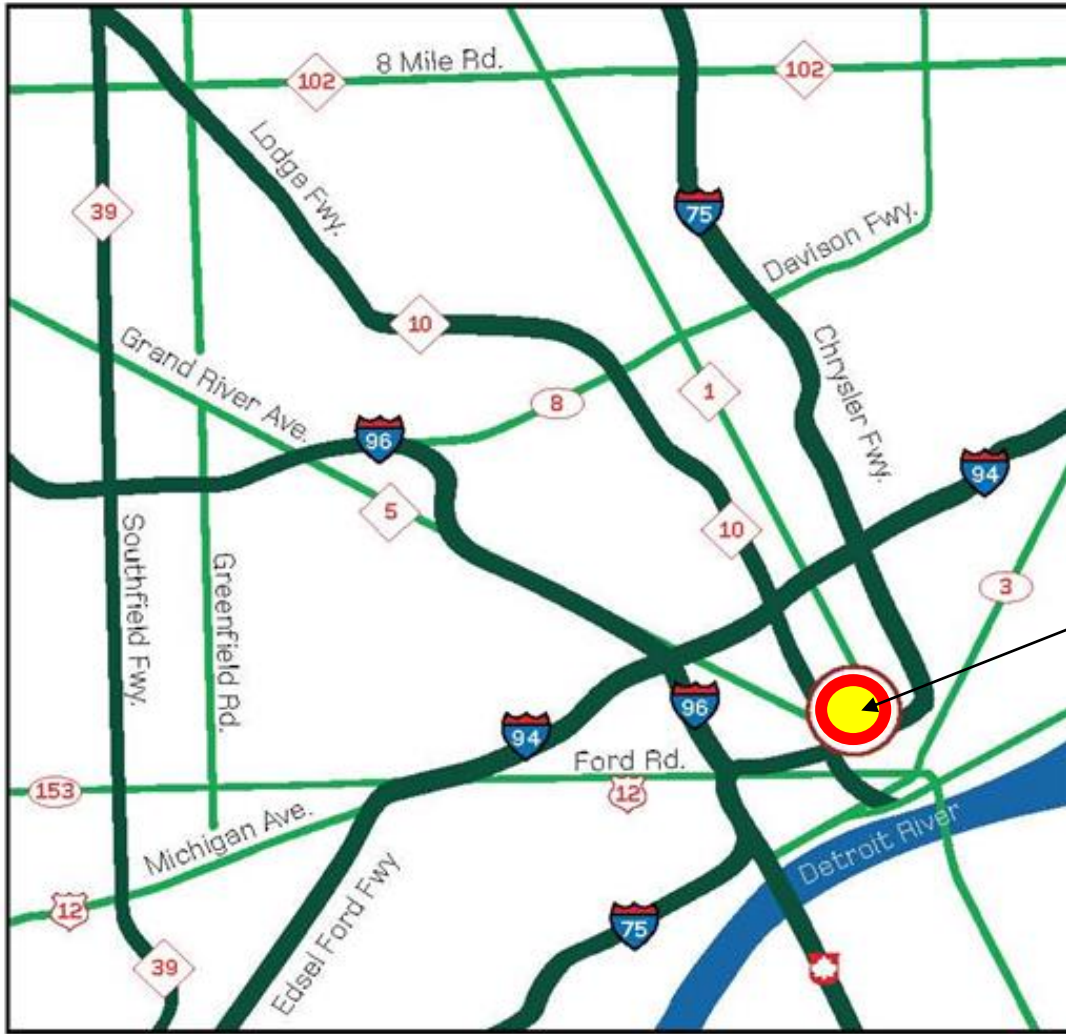
Vehicles displayed on property, when permitted by MotorCity Casino Hotel, must maintain all fire code regulations.

***Please contact us directly regarding all above policies.***

# MotorCity Casino Hotel PROPERTY MAP



## Detroit Area Map



*Matar City*  
CASINO · HOTEL

### Directions

FROM THE EAST/CITY AIRPORT: I-94 West to M-10 (Lodge Freeway) South. Exit M-10 at Grand River Avenue.

FROM THE WEST/METRO AIRPORT: From I-96 East exit I-94 East. Exit southbound on M-10 (Lodge Freeway). Exit M-10 at Grand River.

FROM METRO AIRPORT: Take I-94 East to Southbound M-10. Exit M-10 at Grand River.

FROM THE NORTH: I-75 to Davison Fwy West. Merge onto M-10 south (Lodge Fwy). Exit at Grand River.

FROM THE SOUTH: I-75 north to Clark exit. Turn right on Clark, then immediate left at Fort St. North on Fort St. for 1.5 miles, then left on Trumbull, right on Temple.

## AIRPORTS

Detroit, Michigan has TWO airports

### **DETROIT METROPOLITAN AIRPORT (DTW)**

William G. Rogell Drive

Detroit, Michigan 48212

Phone: (734) 247-7678

Web: [www.metroairport.com](http://www.metroairport.com)

Airline	Phone	Terminal
<a href="#">Air Canada</a>	888-247-2262	North
<a href="#">Air France</a>	800-237-2747	McNamara
<a href="#">Air Tran</a>	800-247-8726	North
<a href="#">American</a>	800-433-7300	North
<a href="#">Delta</a>	800-221-1212	McNamara
<a href="#">Frontier</a>	800-432-1359	North
<a href="#">Lufthansa</a>	800-645-3880	North
<a href="#">Royal Jordanian</a>	212-949-0050	North
<a href="#">Southwest</a>	800-435-9792	North
<a href="#">Spirit</a>	800-772-7117	North
<a href="#">United</a>	800-864-8331	North
<a href="#">US Airways</a>	800-428-4322	North

**Detroit Metropolitan Airport (DTW) General Aviation:** There are two Fixed Base Operators at Detroit Metropolitan Wayne County Airport (DTW) that provide services for private and corporate aircraft. Services include cabin cleaning, fueling, hangars, tie-downs, passenger services and repairs.

For more information on general aviation services at DTW please visit: ASIG (Aircraft Service International Group) at [www.generalaviation.asig.com](http://www.generalaviation.asig.com) or Metro Flight Services at [www.metroflightservices.com](http://www.metroflightservices.com)

### **COLEMAN A. YOUNG INTERNATIONAL AIRPORT (formerly Detroit City Airport) (DET)**

11499 Conner

Detroit, Michigan 48213

Phone: (313) 628-2146

Web: <http://www.ci.detroit.mi.us/Departments/Airport/tabid/72/Default.aspx>

Executive Terminals:      Air Eagle  
                                    City Aviation  
                                    Tuskegee Airmen

The Executive Terminal has a public lounge for general aviation pilot/passenger comfort.

**Airport-Related Websites:**

U. S. Department of Immigration - [www.ins.usdoj.gov](http://www.ins.usdoj.gov)  
U. S. Department of Customs - [www.customs.ustreas.gov](http://www.customs.ustreas.gov)  
Federal Aviation Administration - [www.faa.gov](http://www.faa.gov)  
Transportation Security Administration - [www.tsa.gov](http://www.tsa.gov)

**Area Tourism Sites:**

Detroit Metro Convention and Visitors Bureau [www.visitdetroit.com](http://www.visitdetroit.com)  
State of Michigan: [www.michigan.org](http://www.michigan.org)

**Professional Sports Teams:**

Detroit Red Wings - [www.detroitredwings.com](http://www.detroitredwings.com)  
Detroit Tigers - [www.detroit.tigers.mlb.com](http://www.detroit.tigers.mlb.com)  
Detroit Lions - [www.detroitlions.com](http://www.detroitlions.com)  
Detroit Pistons - [www.nba.com/pistons](http://www.nba.com/pistons)  
For complete Michigan sports team listings: [www.detroitports.org](http://www.detroitports.org)